

Date: 7/23/2018 Author: Rebecca Huggins Project: BC Hydro
Pedre Contractors: 101-26620 56 Ave, Langley, BC, V4W 3X5 Office: 604 881 2411 DWG: 007-A
Comments:

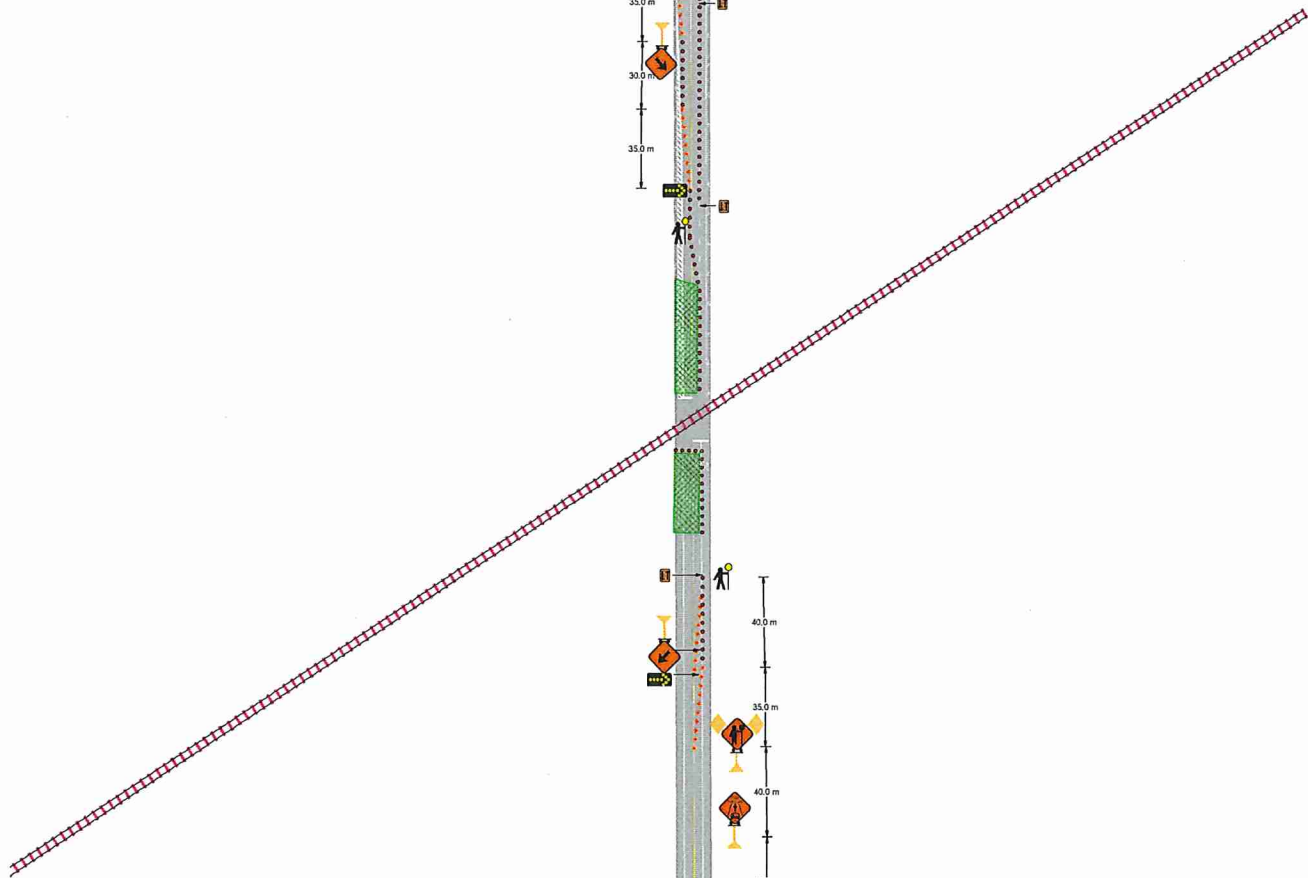
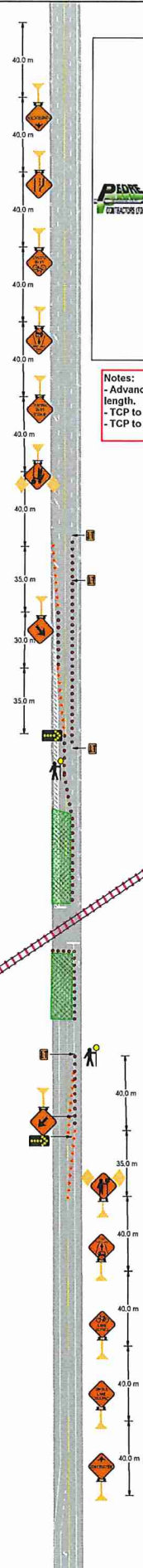
Pedre Contractors
Rebecca Huggins: 604 722 1308



City of Chilliwack
Job Location: Evans Rd - Train Tracks
Closure Description: Single Lane Alternating Traffic - Southbound Lanes Closed
Tentative Date and Hours: August 7, 2018 to August 31, 2018; 7am-7pm
Job Description: BC Hydro Ductbank Installation
Traffic Specifications based on the Traffic Management Manual for Work on Roadways 2015
Traffic Plan based on a 50 km/h speed zone

Notes:
- Advanced Warning Sign distances may be shortened due to urban block length.
- TCP to assist construction vehicles access/ egress.
- TCP to assist pedestrians and cyclists when needed.

Legend	
	2-Way Traffic
	Arrowboard (Single)
	Barrel
	W-C-002
	W-R-001
	C-001-1
	C-018-1A
	C-030-8
	C-053
	C-130-L
	C-184
	Traffic controller
	Windmaster
	Windmaster with flags
	Work Area



Date: 7/23/2018 Author: Rebecca Huggins Project: BC Hydro
Pedre Contractors: 101-26620 56 Ave, Langley, BC, V4W 3X5 Office: 604 881 2411 DWG: 007-B

Comments:

Pedre Contractors
Rebecca Huggins: 604 722 1308



City of Chilliwack

Job Location: Evans Rd - Train Tracks

Closure Description: Single Southbound Lanes Closures - Centerline Crossover

Tentative Date and Hours: August 7, 2018 to August 31, 2018; 7pm-7am

Job Description: BC Hydro Ductbank Installation

Traffic Specifications based on the Traffic Management Manual for Work on Roadways 2015

Traffic Plan based on a 50 km/h speed zone

Notes:
- Advanced Warning Sign distances may be shortened due to urban block length.
- Crossover in effect when SLAT not in place.
- Allow access to driveways

